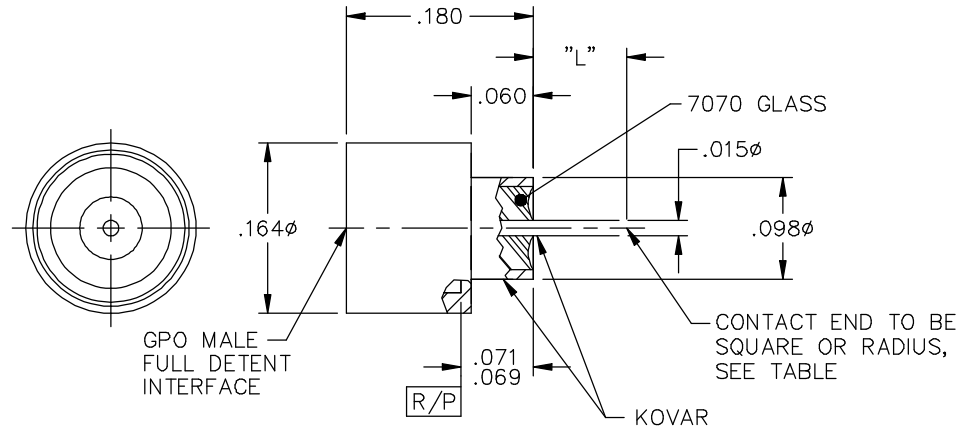
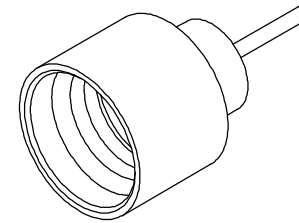


CATALOG NUMBER	"L" LENGTH	CONTACT END
A007-L43-01-TAB-R	SEE CHART	RADIUS=R
A007-L43-01-TAB-S	SEE CHART	SQUARE=S

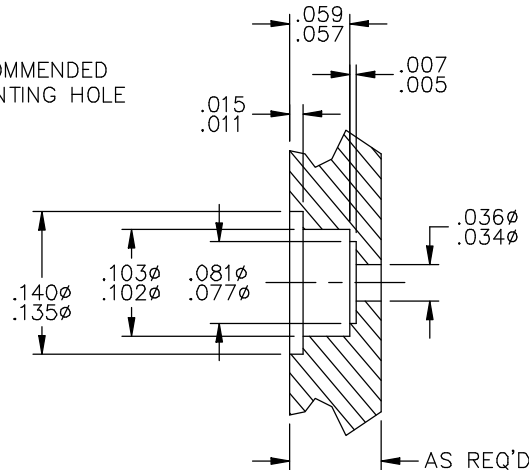
TAB EQUALS "L" X 10³ IN.

LENGTH CHART
.030
.035
.040
.045
.050
.055
.060
.065
.070
.075
.080
.085
.090
.095
.100
.105
.110
.115
.120
.125
.130
.135
.145

HOUSING AND
CENTER CONTACT: IRON-NICKEL-COBALT SEALING ALLOY
(KOVAR) PER ASTM F 15; GOLD PLATE
DIELECTRIC: CORNING 7070 GLASS



RECOMMENDED
MOUNTING HOLE



This drawing and any data contained herein is the property of Corning Gilbert Inc., and constitutes and contains proprietary and confidential information. Neither receipt nor possession of this drawing confers or transfers any right to duplicate, use or disclose any information contained herein except as expressly authorized by Corning Gilbert Inc.

GPO MALE FULL DETENT SOLDER-IN HERMETIC SHROUD	IDENT CODE: 82316	Corning Gilbert Inc.
	REVISION: J	

SOURCE FILE: MECR# 2299	DWG. NO.: OL-A007-L43-01-TAB	ASSY. PROC.: -
-------------------------	------------------------------	----------------